

Setting-up EasyGPS

NOTE – Read this page carefully before proceeding. You may need to install a cable driver before you install EasyGPS!



If you are intending to connect to a GARMIN GPS receiver that uses the above connector, you will most likely strike complications as these GARMIN leads generally come fitted with a Serial connector on the computer end of the cable (see below).



As many computers do not have serial sockets anymore (particularly laptops) you may need to use a Serial to USB adaptor. Alternatively, GPSOZ Sydney can supply an 'all in one' cable, which is designed for USB connections - code No. GAREUSB)

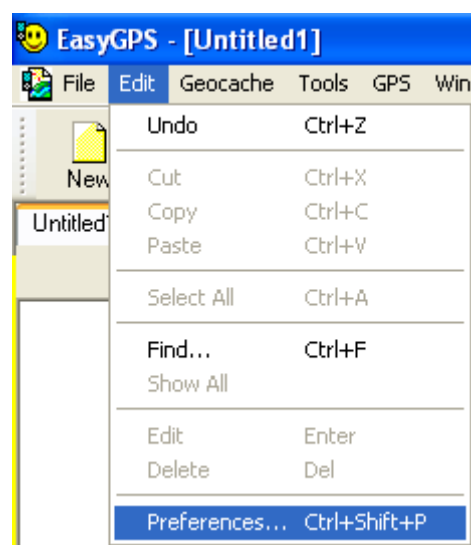
As a result, you will need to install the relevant cable driver to make the Serial to USB adaptor **or** the 'all in one' cable work. Go to www.spatialeducation.com, click on downloads, and install either the 2000/XP USB driver or Vista USB driver.

If you **DO HAVE** a serial socket on your computer and are using a cable with a serial plug (9 pins), then you **DO NOT** need to install any cable driver and can ignore this page and proceed straight to step 1 (next page).

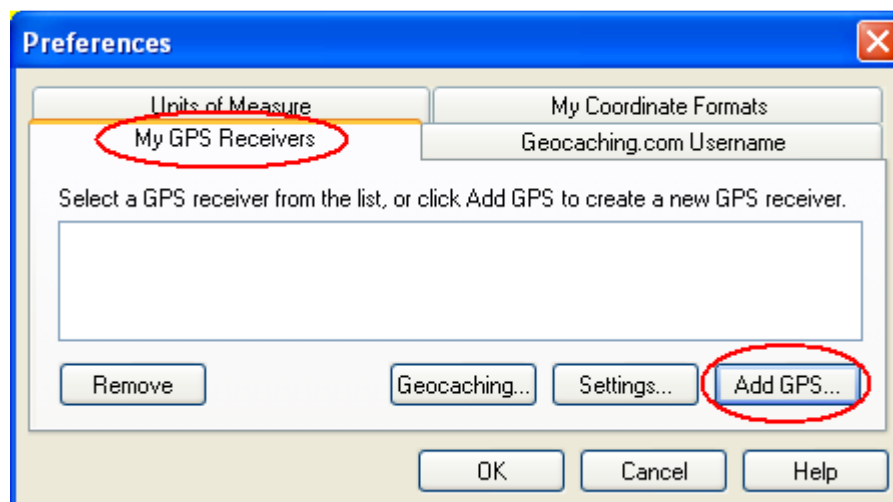
1. Plug the data cable into the computer
2. Install the software
3. Set-up the EasyGPS software preferences.

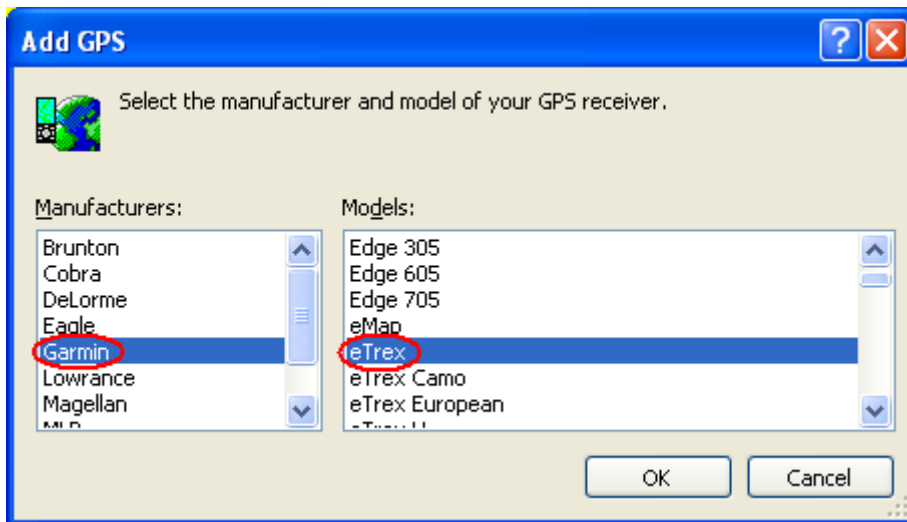
NOTE - For new installs, the preferences screen should automatically display (and will most likely only have 2 tabs available). Set those 2 preferences and then set additional settings using the pathway below.

For existing installs, the preferences screen is found using the following path

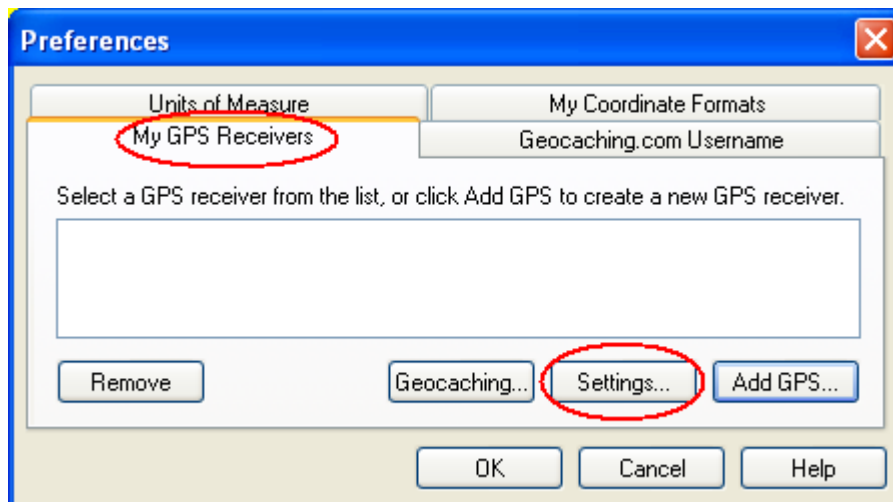


Add GPS Receivers

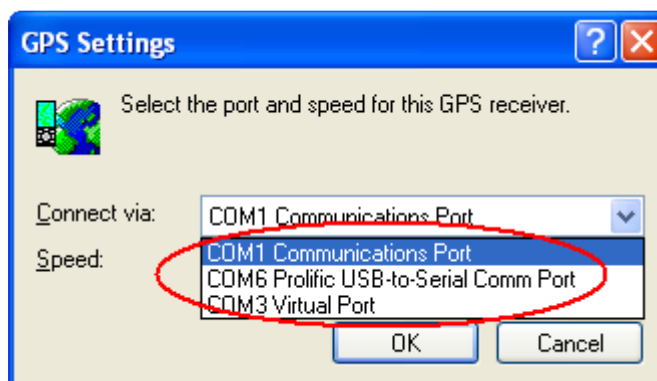




Set-up the GPS Settings



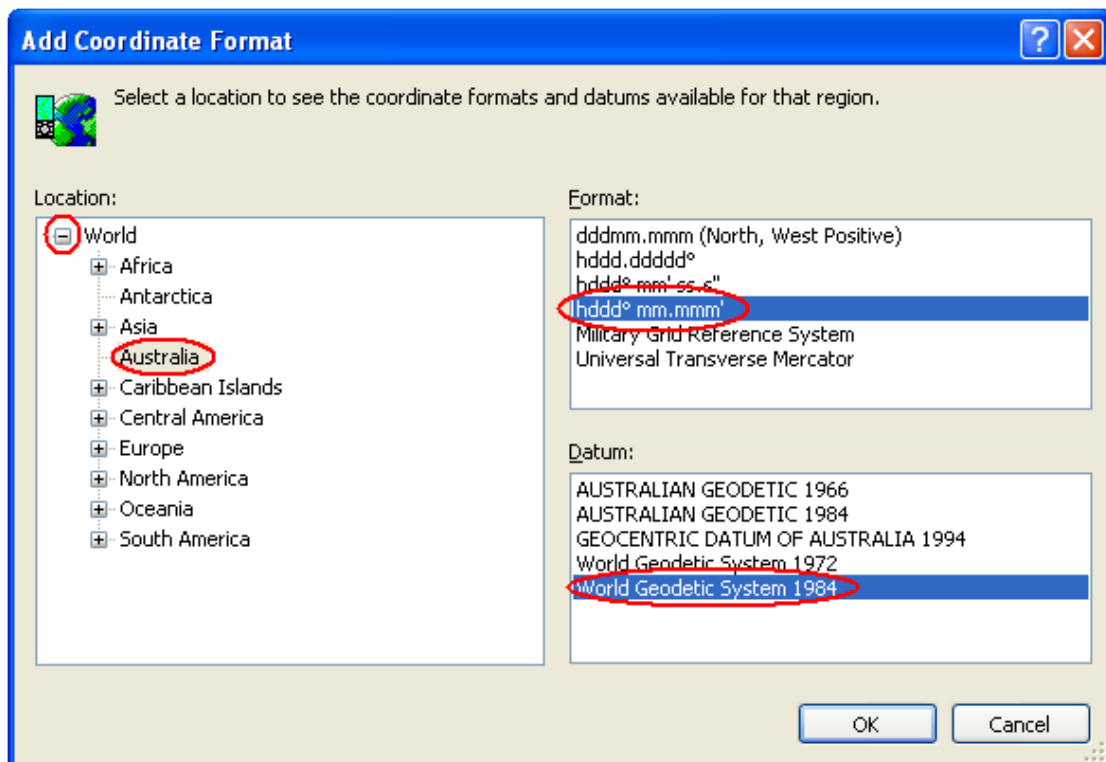
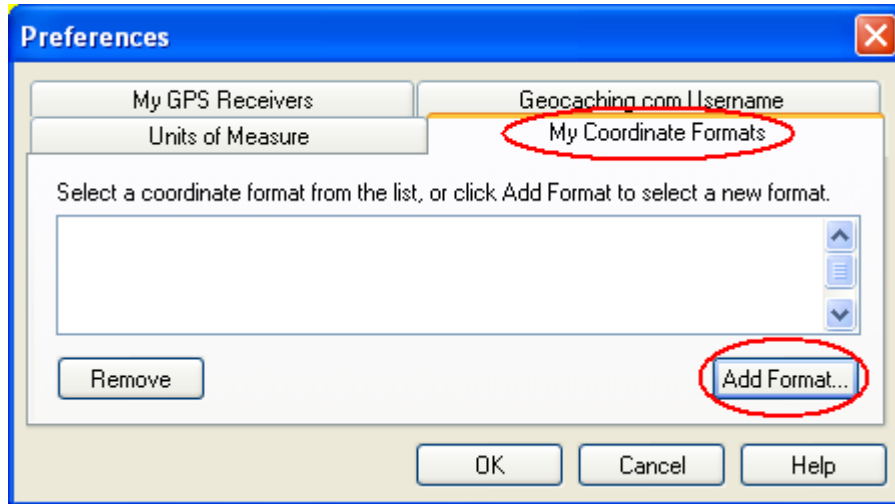
Set to USB for USB cable/adaptor options **OR** select communications port from the drop down menu. If you have multiple listings for communications ports, then you may have to use a bit of 'trial and error' (i.e. try one setting, click on receive and see if it works, if not change settings until successful).



Add the following Coordinate systems:

Australia / hddd° mm.mmm' / World Geodetic Systems 1984

Australia / Universal Transverse Mercator / Geocentric Datum of Australia 1994



Set Units of Measure

The image shows a 'Preferences' dialog box with a tabbed interface. The 'Units of Measure' tab is selected. It contains two columns of dropdown menus for setting units. The first column includes Distance (Meters), Elevation (Meters), Speed (km/hr), and Bearing (Degrees (Azimuth)). The second column includes Area (Square Meters), Temperature (Celsius), Depth (Meters), and Grade (Percent). Below the dropdowns is a text instruction: 'Choose the units of measure used to display distance, elevation, and speed.' At the bottom are three buttons: 'OK', 'Cancel', and 'Help'.

My GPS Receivers	Geocaching.com Username
Units of Measure	My Coordinate Formats
Distance: Meters	Area: Square Meters
Elevation: Meters	Temperature: Celsius
Speed: km/hr	Depth: Meters
Bearing: Degrees (Azimuth)	Grade: Percent

Choose the units of measure used to display distance, elevation, and speed.

OK Cancel Help